

CANCER PREVENTION & SCREENING HIGHLIGHT:

HPV-Related Cancer Prevention & Screening Clinic

In 2023, St. Peter’s Cancer Center collaborated with Capital Pride Center, American Cancer Society and Albany Medical Center to develop an HPV-related cancer education, screening and prevention program.

Long-lasting infections with high-risk HPVs can cause cancer in parts of the body where HPV infects cells. HPV is linked to causing six types of cancer - anal, cervical, oropharyngeal, penile, vaginal, and vulvar cancer. It causes an estimated 630,000 cancers worldwide each year. Even lesser known is the fact that these cancers disproportionately affect LGBTQ+ people.

The public was invited to an in-person, educational session led by an SPHP radiation physician at the Capital Pride Center. HPV facts, its correlation to cancer, and behavioral risk prevention were presented to several attendees. Also,

attendees were encouraged to receive the HPV vaccination, which prevents the most common forms of high-risk HPV, and also offered a cancer screening.

Additionally, HPV vaccines and cervical, anal, penile and oral screenings were offered at the event. Five participants received cervical, oral, anal and penile screenings. None were found to have any concerning findings requiring follow-up. Since this event, our team is continuing to seek to collaborate with other LGBTQ+ programs.

Additionally, the goal of the program is to start collaborating with local colleges to provide vaccinations to students. It is expected this program will continue to grow.



ST PETER’S HEALTH PARTNERS

Cancer Care

A Member of Trinity Health

315 S. Manning Boulevard
Albany, NY 12208
www.sphp.com

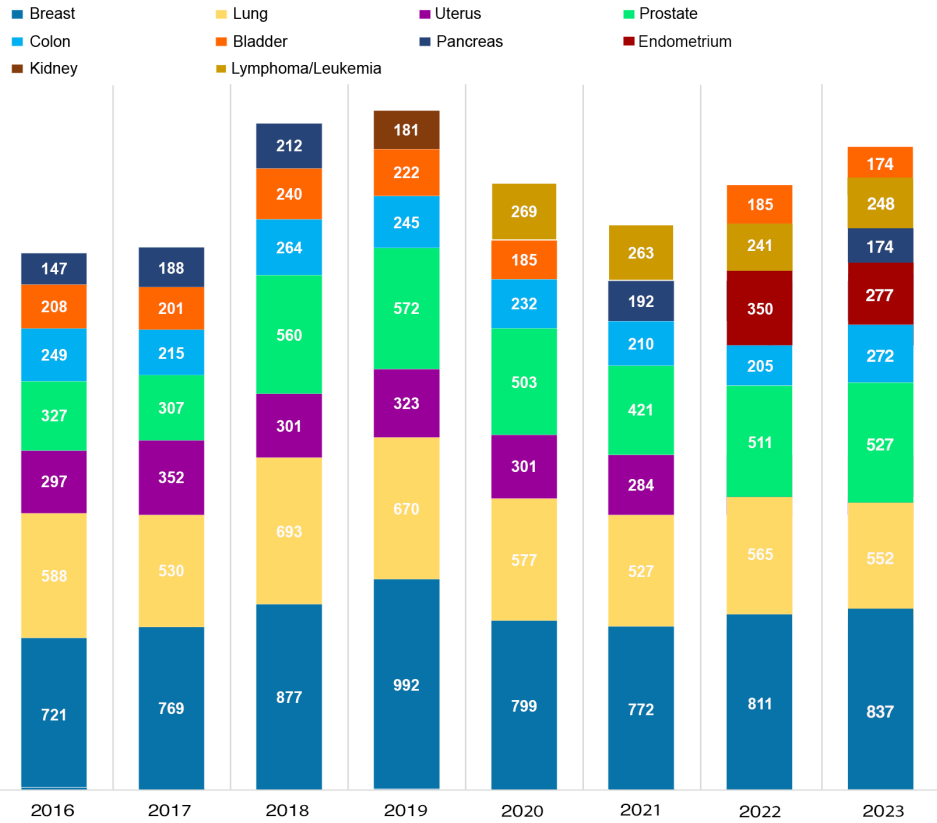
ST. PETER’S HEALTH PARTNERS
CANCER CARE ANNUAL REPORT

CANCER CARE IN ALBANY & TROY

Caring for the Greater Capital Region

In 2023, St. Peter’s Health Partners Cancer Care program continued to provide care for a large volume of new cancer patients at our locations in Albany and Troy. In total, we diagnosed and/or treated 4,757 new cancer patients. The top cancer sites treated were breast, lung, prostate, endometrium, pancreas, colon, lymphoma/leukemia, and bladder.

THE TOP CANCER SITES WE TREAT



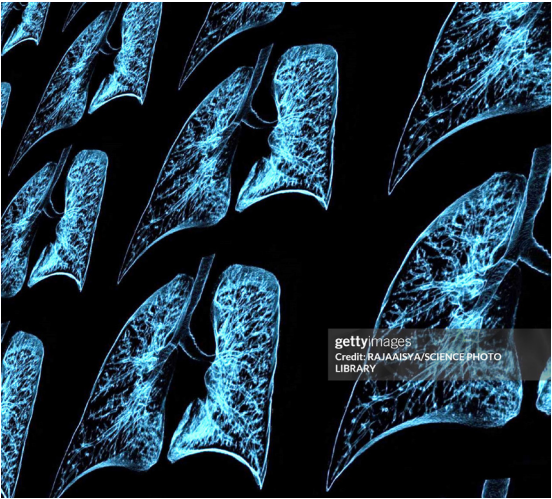
QUALITY & SAFETY

Lung Cancer Screening (LCS)

Lung cancer kills more Americans than any other cancer, causing an estimated 160,000 deaths each year. Lung cancer often doesn’t show symptoms until it has progressed to advanced stages, which is then difficult to treat. When lung cancer is detected early, treatments can be successful in increasing survival rates.

In 2023, St. Peter’s cancer care team focused on lung cancer screening as a quality goal. With leadership endorsement, the Cancer Care Center was able to hire a lung nurse navigator in 2023. The lung nurse navigator’s role was to support lung cancer screening efforts, track patients and compliance with screening guidelines, distribute gap lists to primary care offices for patients who may be eligible for low-dose CT screening, and educate offices throughout SPHP of the LCS program and guidelines.

Since the start of the LCS nurse navigator, there was an increase of 29.4% more lung screenings and 59% more biopsies were performed as a follow-up of screenings due to the navigator’s outreach work.



PROGRAM OVERVIEW

St. Peter's Health Partners Cancer Care



WE ARE A LOCAL CENTER, SERVING THE REGION & BEYOND
NY • VT • MA • NV • AZ • CT • FL • GA • OH • SC

In 2023, we served patients from more than 36 counties in New York state, with the largest volumes coming from Albany, Rensselaer, Saratoga, Schenectady, Columbia, Greene, Fulton, Warren, Montgomery, Ulster and Washington counties. We drew patients from 10 states in the nation.

COMPREHENSIVE CANCER CARE
DIAGNOSIS TO SURVIVORSHIP

We take a holistic approach to treating cancer, by caring for the whole patient – mind, body and spirit. Our providers take care to address the physical and emotional changes patients may experience and provide resources so patients can thrive after cancer. Please visit our website for information on how to access these services.

- ✓ Physical therapy
- ✓ Occupational therapy
- ✓ Speech and audiology
- ✓ Complementary therapies
- ✓ Survivorship care plans
- ✓ Nurse navigators

EXCELLENCE IN CANCER CARE
IN ALBANY & TROY

St. Peter's Hospital Cancer Care Center
St. Peter's Hospital | 317 S. Manning Blvd. | Albany



Hildegard Medicus Cancer Center
Operated by Samaritan Hospital
Samaritan Hospital
St. Mary's Campus | 1300 Massachusetts Ave. | Troy
Main Campus | 2215 Burdett Ave. | Troy



STATE-OF-THE-ART
SCREENING & DIAGNOSTICS

- ✓ 3D Mammography
- ✓ ENDOSCOPIC Ultrasound and biopsy
- ✓ BREAST MRI
- ✓ SPYGLASS™ Direct Visualization System
- ✓ VATS (Video-assisted thoracoscopic surgery)

LEADING-EDGE TREATMENTS

- ✓ DA VINCI® XI Surgical System
- ✓ RADIOFREQUENCY Ablation
- ✓ RAPIDARC® Radiotherapy
- ✓ STEREOTACTIC Radiosurgery
- ✓ SURFACE-GUIDED AlignRT®
- ✓ IMAGE-GUIDED Brachytherapy

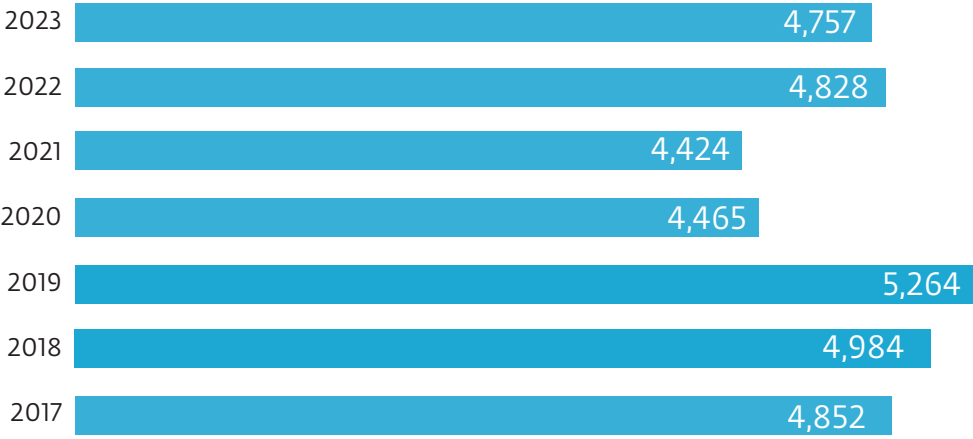
CLINICAL TRIALS

We conduct cancer research trials in Albany and Troy, as well as refer out to other sites. Patients interested in enrolling should speak to their health care team to discuss possible benefits, risks and qualifications. Our research department can be reached at 518-525-6739.

68

Patients enrolled in trials at our sites in 2023

PATIENT VOLUMES



Number of new patient cases per year



57.52%
FEMALE



42.41%
MALE



650

Patient cases reviewed at our multidisciplinary tumor board in 2023

21,072
PATIENTS

Followed for life since 2009

ONCOLOGY

